



# CFX 75 H

## 1" x 1" Hose Connection

### End Suction Centrifugal Pumps

The CFX 75 H is a premium centrifugal pump designed for high-performance fluid transfer across diverse applications. From marine and agricultural operations to commercial and industrial environments, this pump delivers consistent efficiency and reliability.

Constructed from 316 stainless steel, it provides exceptional resistance to corrosion, making it suitable for chemical handling and other compatible fluids. Its durable build ensures long service life even under demanding conditions.

The pump incorporates a semi-open impeller made from sintered PM for optimized fluid movement and performance. A carbon/ceramic/Viton bellows shaft seal, rated up to 150 PSI (10 bar), guarantees secure, leak-free operation.

For unique requirements, custom seal options are available. With ports that rotate in 90° increments, the CFX 75 H adapts easily to various configurations, offering convenience and versatility for professionals seeking a dependable, easy-to-install solution.

#### SPECIFICATIONS:

<b>Port Sizes</b>	1" x 1" Hose Connection.
<b>Materials of Construction</b>	316 stainless steel
<b>Flow</b>	Up to 28 GPM (6 m <sup>3</sup> /h)
<b>Head Feet</b>	Up to 32' (10 m)
<b>Impeller</b>	316 Stainless steel, Semi-Open (Sintered PM)
<b>Drive Options</b>	12VDC 115VAC ODP .08 Displacement Hydraulic
<b>Seal</b>	Standard carbon/ceramic/Viton Bellows 150 PSI (10 bar), Special seals upon request,
<b>Housing</b>	316 Stainless Steel (Investment Cast)
<b>O Ring</b>	Viton
<b>Cover</b>	316 Stainless Steel (Investment Cast)
<b>Weights</b>	Pump W/AC Motor 15 lbs. (6.8 kg), Pump W/DC Motor 9.5 lbs (4.3 kg)

#### Application:

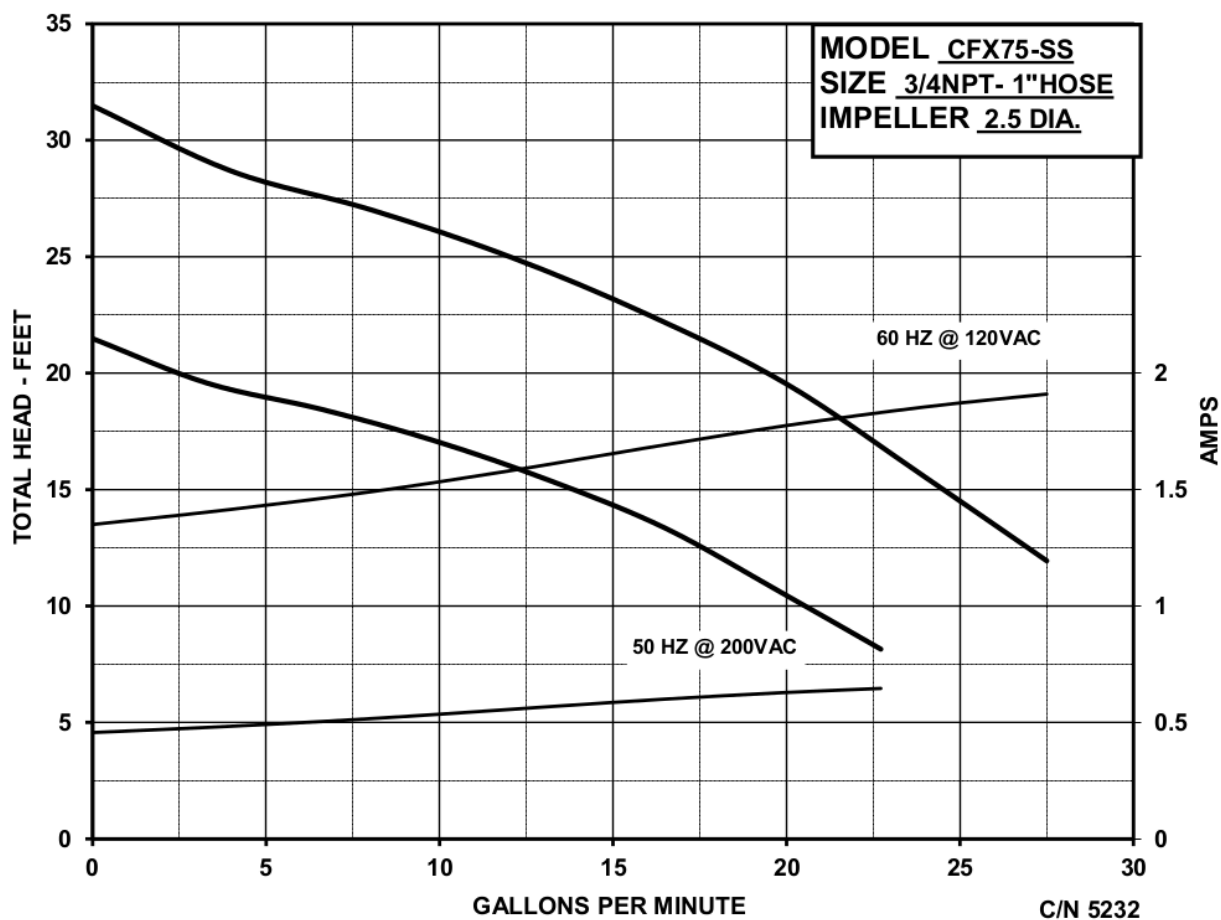
- Agricultural
- Commercial
- Industrial
- Marine



An Ingersoll Rand Business

# CFX75 H

## PERFORMANCE CURVES



12500 South Pulaski Road  
Alsip, IL 60803, USA  
Phone (800) 563-8006

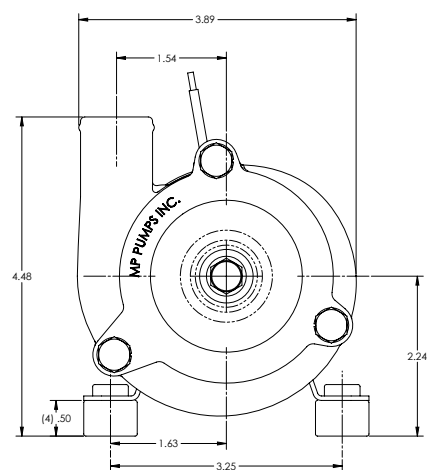
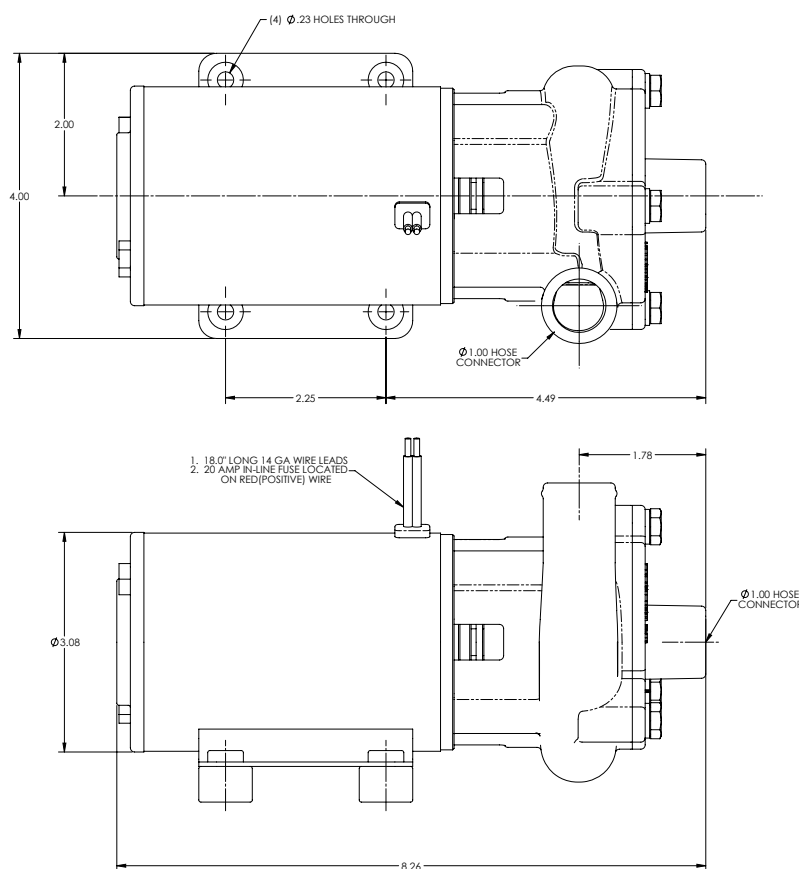


An Ingersoll Rand Business

# CFX75 H

## DIMENSIONS

12V and 24V DC



\* For complete parts lists and troubleshooting guidance, please refer to the MP Pumps Installation Operation & Maintenance (IOM) Manual.



12500 South Pulaski Road  
Alsip, IL 60803, USA  
Phone (800) 563-8006